



K.SRI C STANDARD ACCLAIMED ROBUSTNESS & TOP CLASS INSULATION BY KÄSSBOHRER

The new standard reefer K.SRI with its 1.000.000 km tested, gooseneck chassis integrated, strong one-piece king pin structure presents long life robustness and endurance in all road and loading conditions. The robust and precisely connected and protected GRP panel's structure presents top of the class insulation with state of the art air circulation system for single deck, double deck, multi temperature for fresh and frozen goods, flowers and pharma transportation.

The 7.2 ton forklift axle accommodating robust floor is covered with anti-slip aluminum and panel-floor integrated kick plates for further robustness. The new door and bumper design is robust and fitted with rubber and galvanized stainless steel shock absorber ramp buffers for vehicle longevity. The new standard reefer presents inner height of 2.650 mm and the inner width of 2.460 mm at 7.200 kg tare weight is FRC, PHARMA, HACCP, CODE XL certified and is compatible with telematics of your choice. Self steering axels and loading ramps are offered as options.



**TOP CLASS
INSULATION**

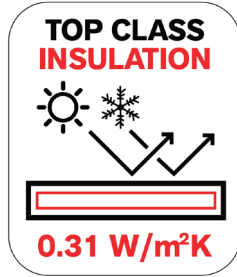
0.31 W/m²K



ENHANCED FEATURES

TOP CLASS INSULATION WITH K-VALUE OF 0.31 W/M²K

Box panels are constructed with the GRP (Glass Reinforced Polyester) polyurethane panel technology to providing top class insulation



TCO SAVE UP TO 9300€ IN 5 YEARS*

With top class insulation significantly reduce the running time of your refrigeration unit, saving up to 9300 € fuel saving in 5 years compared to metal covered side panels.* (Fuel price 1.80 eur per litre as of march 2024)

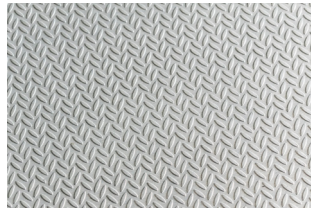
BUMPER AND REAR FRAME PROTECTED

Complete protection while back docking with vertical rubbers and cylindrical roller galvanized stainless steel ramp buffers.



FLOOR 7.2 TON FORKLIFT CAPACITY

The floor with 7.2 ton capacity for forklift axle load is covered with anti-slip waterproof aluminum and panel-floor integrated kick plates for further robustness.



VENTILATION TUNNEL SYSTEM EQUAL AIRFLOW ALONG THE WHOLE BOX

Standard air circulation wall, ventilation cover and ventilation double tube tunnels evenly cools every area within the vehicle in single deck, double deck, multi temperature for fresh and frozen goods.



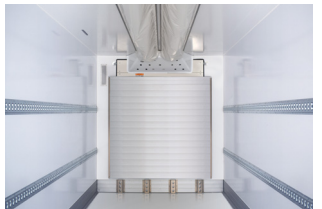
CHASSIS ACCLAIMED ROBUSTNESS

KTL Coated gooseneck chassis with one-piece king pin structure provides excellent durability without losing any internal height.



AIR CIRCULATION WALL MULTI-PURPOSE

Ensures precise airflow and superior cooling unit protection against impact while preventing frosting of goods close to cooling unit.



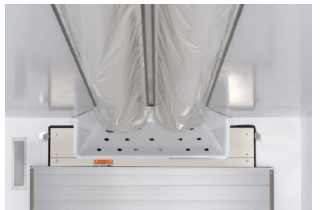
BOX STRUCTURAL UNIFORMITY FOR ENDURANCE

Precisely engineered structural uniformity with the robust chassis's width, maximized adhesion surface in all side panel connections, single piece rear frame.



VENTILATION COVER VERSATILE

Ventilation cover is compatible with all premium cooler units.



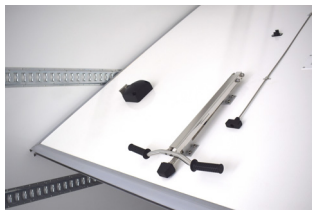
TESTS VERIFIED FOR LONG PRODUCT LIFE

Dynamic off-road tests, equivalent to 1.000.000 km, guaranteeing structural integrity for long lifetime.



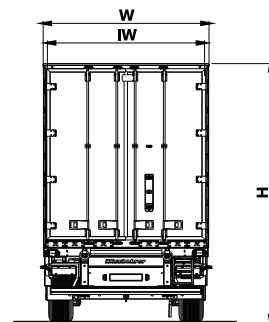
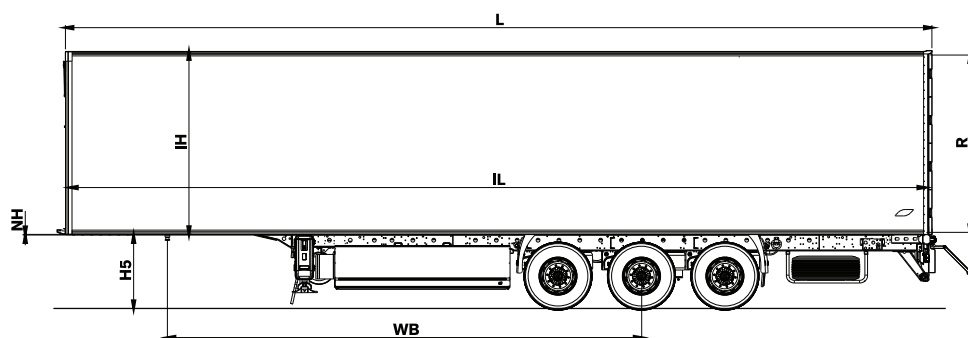
SEPERATION WALL MULTI-TEMPERATURE TRANSPORT

Easy to use partition wall that provides multi-temperature transport.



K.SRI C / 10 - 12 / 27

SPECIFICATIONS



TECHNICAL INFORMATION

Chassis	Made of high quality and high strength S700 MC steel, in compliance with Standard ISO 1726. Made of two welded longitudinal beams in I form with cross beams at needed distances.
Brake System	Dual-circuit electro-pneumatic Wabco brand EBS 2S/2M braking system with anti-lock (ABS) and tilt control system (RSS) in compliance with UN ECE R13 regulation. 385/65 R22.5
Tyre Size	385/65 R22.5
Axles	BPW brand disc brakes axle with pneumatic suspension system.
Electric System	On the vehicle, there are Aspöck Europoint 3 bulb type 24V rear lamps. There are 4 pieces of LED position lamps mounted on the front panel; color white. There are 2 pieces of LED top lights mounted on the rear; color red. There are 4 pieces of LED marker lamps mounted on each side panel; color orange. There are 2 pieces of bulb type license plate lighting.
Floor	The 135 mm thick floor which has 3 mm aluminum teardrop patterns complies with EN 283 norm and is resistant to 7.200 kg forklift axle load. Floor reinforced with special crosses for better insulation.
Upperstructure Type	Equipped with highly-insulated 61 mm thick glass reinforced polyester sandwich side panel technology and composite reinforcement parts in order to improve strength side panels as well as excellent insulation efficiency. 73 mm thick front panel is prepared for cooling unit montage. 250 mm height aluminium kick plate across the side panels and front panel internal surface. These kick plates are welded to the floor in order to improve box strength. 85 mm double-winged and GRP-covered doors with insulation and seals around the wings. 140 mm height aluminium kick strip fitted at the base of each rear door. Hinge protection rubber buffers fitted vertically full height of the rear frame. Extra GRP profiles are located in the rear pillars in order to improve the rear construction of the vehicle. 84 mm thick roof panel with 4 special built-in LED interior lights are included.

Enhanced Features

Wide Range of Options

- Load security rails
- Telematics
- Load fixing round bars
- 24 30 36 Pallet Capacity Pallet Box
- 240 L Fuel Tank
- 830 x 500 x 470 mm Tool Box
- Tail-lift
- Self-steering Axle
- Axle
- SBS Turtle door lock
- Spare wheel holder
- Rear entrance spare wheel holder
- Food Box
- Cooling Units
- Partition Wall: movable via two bars system on the roof to enable transportation with two different temperature zones
- 1st only or 1st and 3rd axle lifting with driving assistance from trailer or cabinet

TECHNICAL DATA

Fifth Wheel Height (H5)	1.150 mm
Wheelbase (Wb)	7.450 mm
External Length (L)	13.600 mm
Internal Length (IL)	13.385 mm
Total Width (W)	2.600 mm
Internal Width (IW)	2.460 mm
Internal Height (IH)	2.650 mm
Tare Weight ±%3	7.204 kg

TECHNICAL CAPACITIES

King Pin Capacity	12.000 kg
Axle Load	27.000 kg
Total Weight	39.000 kg

Kässbohrer semi-trailers are manufactured according to lean production and quality principles in consideration of total cost of ownership.

Kässbohrer reserves the right to alter the product specification. Visual and technical data subject to change according to vehicle configuration.

Kässbohrer Sales GmbH

Werk Ulm | Im Katzenwinkel 5, 88480 Achstetten, Deutschland | T +49 (0) 7392 96797-0 | F +49 (0) 7392 96797-67

Werk Goch | Siemensstraße 74, 47574 Deutschland | T +49 (0) 2823 9721-0 | F +49 (0) 2823 9721-21 | E info@kaessbohrer.com | www.kaessbohrer.com